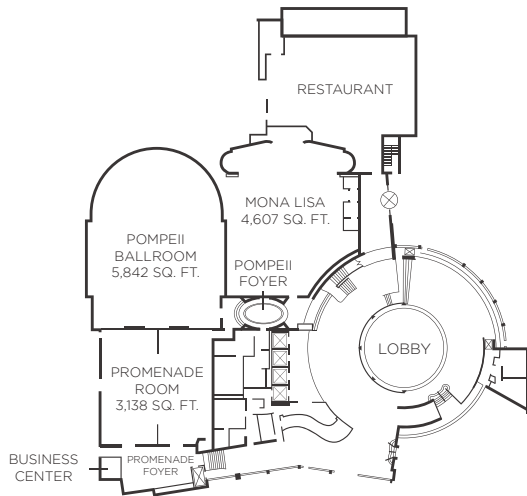
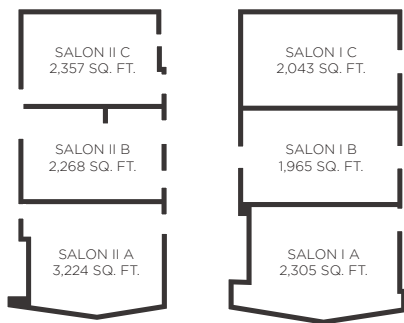


EDEN ROC MEETING SPACE



LEGENDARY TOWER - LOBBY LEVEL

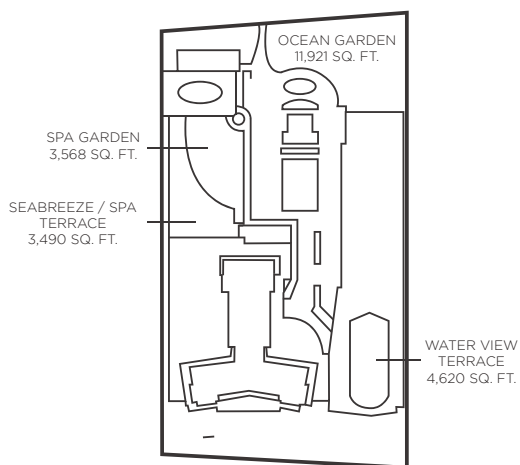
OCEAN TOWER



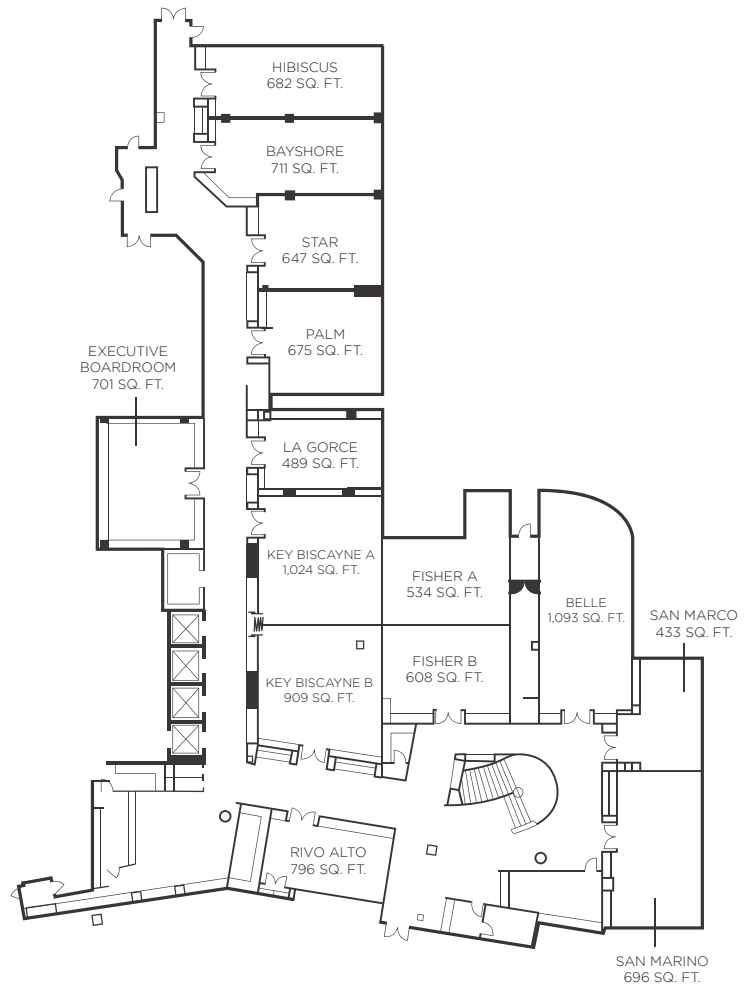
BALLROOM 2
UPPER LEVEL

BALLROOM 1
LOBBY LEVEL

OUTDOOR EVENT SPACE

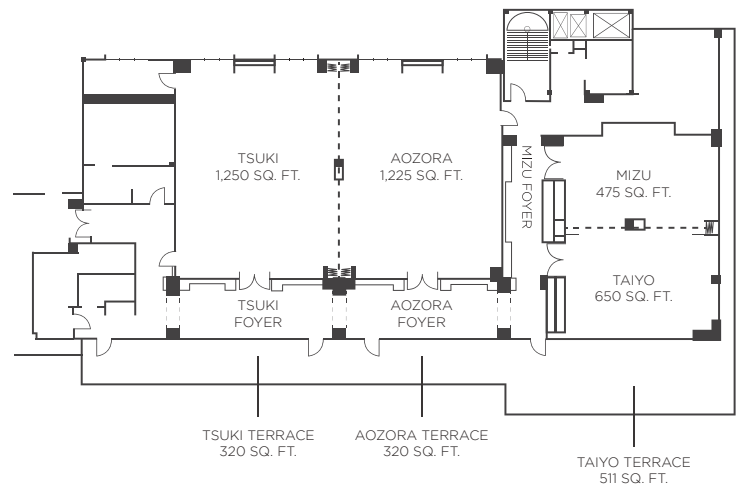


OUTDOOR TERRACE



LOWER LOBBY LEVEL - CONFERENCE LEVEL

NOBU MEETING SPACE



NOBU HOTEL

Eden Roc

ROOM NAME	Actual Sq. Ft.	L	W	Ceiling Height	60" Round 8 -Plated	66" Round 10 -Plated	72" Round 11 - Plated	Meeting - Cres. Rds 6	Meeting - Cres. Rds 8	Theater	Class 2per6	Class MAX	Recept.	Conf	Ushape
EDEN ROC MEETING SPACE															
Bayshore Room	711	39	19	8	64	60	60	48	48	70	24	36	72	26	28
Belle	1,093	49	27	7.3	56	70	72	42	56	95	42	55	112	26	25
Executive Boardroom	701	26	32	8	-	-	-	-	-	-	-	-	-	20	-
Fisher	1,142	49	30	7.3	64	70	72	48	56	90	32	48	96	-	-
Fisher A	534	21	28	7.3	32	30	24	24	24	40	20	30	46	20	20
Fisher B	608	28	30	7.3	24	30	24	18	24	35	14	21	40	20	18
Hibiscus Room	682	40	17	8	48	50	48	18	24	72	28	42	72	30	28
Key Biscayne Room	1,933	69	31	8	112	110	108	84	80	160	80	123	160	52	52
Key Biscayne A	1,024	36	31	8	56	60	72	42	48	90	40	60	98	24	32
Key Biscayne B	909	34	31	8	40	50	48	30	40	84	32	48	84	24	24
La Gorce Room	489	28	17	8	24	30	36	18	24	30	16	24	35	18	16
Mona Lisa	4,607	70	73	12	240	260	312	144	208	364	112	168	364	30	33
Ocean Tower Ballroom I	6,313	120	55	15	496	500	492	372	400	730	282	434	744	120	152
Salon I A	2,305	45	59	15	176	200	204	132	160	264	102	146	264	40	52
Salon I B	1,965	37	56	15	160	150	120	90	120	226	90	144	240	40	48
Salon I C	2,043	37	56	15	160	150	168	90	120	240	90	144	240	40	52
Salon I AB	4,270	82	60	15	320	280	300	144	192	490	192	290	504	80	100
Salon I BC	4,009	75	56	15	248	200	192	124	160	466	180	288	480	80	100
Ocean Tower Ballroom I Foyer	2712	30	145	12	-	-	-	-	-	-	-	-	200	-	-
Ocean Tower Ballroom II	7,850	140	72	18	512	500	504	288	384	806	288	488	806	112	120
Salon II A	3,224	58	72	18	176	200	252	96	160	276	102	171	291	40	56
Salon II B	2,268	41	61	18	160	150	120	96	120	220	98	156	220	40	52
Salon II C	2,357	41	61	18	176	150	120	96	120	220	98	156	220	40	52
Salon II AB	5,493	99	72	18	244	300	300	168	224	480	208	296	480	72	88
Salon II BC	4,625	82	61	18	200	250	240	150	200	350	160	210	506	72	84
Ocean Tower Ballroom II Foyer	3,063	53	157	10	-	-	-	-	-	-	-	-	300	-	-
Palm Room	675	28	25	8	40	40	36	30	32	60	32	36	60	20	22
Pompeii Ballroom & Promenade	8,963	162	66	18	520	610	636	444	448	1000	366	461	1000	64	88
Pompeii Ballroom	5,842	112	66	18	336	380	420	306	248	675	256	305	675	64	88
Promenade	3,138	58	57	9	184	230	216	138	184	275	110	156	275	28	-
Promenade A	1,418	56	27	9	80	100	96	60	80	126	50	65	126	36	33
Promenade B	1,703	56	31	9	104	130	120	78	96	156	60	90	156	44	40
Rivo Alto	796	39	17	8	40	50	48	30	40	56	20	30	56	26	26
San Marco	433	24	17	8.5	16	20	12	12	16	20	12	18	25	16	14
San Marino	696	21	31	8.6	40	40	36	30	32	60	24	36	68	24	25
Star Room	647	28	22	8	50	40	36	18	32	40	32	36	58	20	22
OUTDOOR SPACE															
Seabreeze/Spa Terrace	3,490	-	-	-	80	80	96	-	-	-	-	-	250	-	-
Spa Garden	3,568	-	-	-	168	200	228	-	-	-	-	-	250	-	-
Water View Terrace	4,620	-	-	-	-	-	300	-	-	-	-	-	500	-	-
Ocean Garden	11,921	-	-	-	448	560	672	-	-	-	-	-	1500	-	-
Ocean Garden A	4,000	-	-	-	160	200	240	-	-	-	-	-	500	-	-
Ocean Garden B	4,000	-	-	-	160	200	240	-	-	-	-	-	500	-	-
Ocean Garden C	4,000	-	-	-	128	160	192	-	-	-	-	-	500	-	-
Ocean Garden AB	8,000	-	-	-	320	400	480	-	-	-	-	-	1000	-	-
NOBU MEETING SPACE															
Aozora & Tsuki	2,460	30	82	8.2	96	-	-	72	96	140	60	90	120	40	40
Tsuki	1,250	30	41	8.2	48	-	-	36	48	70	30	45	60	20	20
Aozora	1,225	30	41	8.2	48	-	-	36	48	70	30	45	60	20	20
Taiyo	650	21	32	8.2											
Mizu	475	23	32	8.2											
EXISTING LOUNGE TFURNITURE FOR 16 PEOPLE															
BOARDROOM EXISTING SETUP FOR 14 PEOPLE															
NOBU MEETING SPACE - TERRACES															
Taiyo Terrace	511	37	13	-	-	40	-	-	-	-	-	-	-	-	-
Tsuki Terrace	320	40	8	-	-	-	-	-	-	-	-	-	-	-	-
Aozora Terrace	320	40	8	-	-	-	-	-	-	-	-	-	-	-	-